



Planer Mill for Sale

Mfr: Kysor Machine Tool_Gray Machine

Age: Original Gray Planer, 1950's, rebuilt by Futurmill 1981

Model: Kysor-Futurmill Double Housing Planer Type Milling Machine

Size: 61in between columns, 59in under spindle, 73in under rail, 28 ft table travel

**Rail Head: 50HP AC, 10 speed geared changes, 50 - 599rpm, No50 MM Taper Spindle,
8in dia quill with 10in travel**

Cross Feed Head Drive: 5HP DC, SCR control ballscrew drive, 0-100ipm

Side Head: 30HP AC, 10 speed geared changes, 50 - 599rpm, No50 MM Taper Spindle

Table: 20HP DC, SCR control, 0-400ipm, 56in wide x 28ft-11in long, 38in high

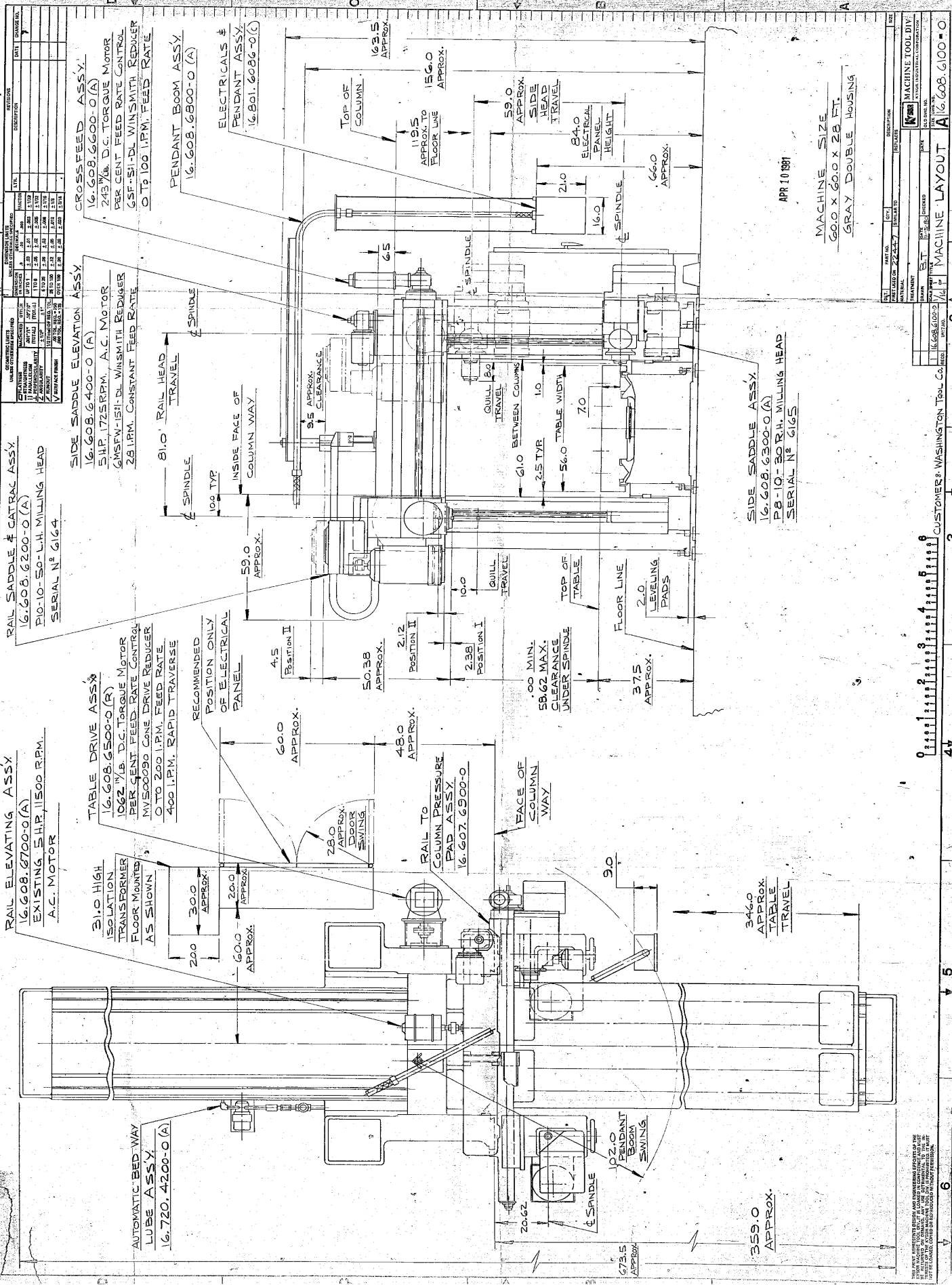
Overall dimensions: 57ft- 6in bed, 12ft - 6in wide, 13ft - 6in high

Machine still installed and operational.

Location: Near Pittsburgh, PA USA

Contact Dev Lemster for pricing or more details.

over for GA Drawing>>>>>



RAIL SADDLE & CTRAL ASSY.
 16.608.6200-0 (A)
 PID-10-50- L.H. MILLING HEAD
 SERIAL N° 6164

SIDE SADDLE ELEVATION ASSY.
 16.608.6400-0 (A)
 5 HP, 1725 RPM, A.C. MOTOR
 GMSFW-151-DL WINSMITH REDUCER
 2.8 I.P.M. CONSTANT FEED RATE

CROSS FEED ASSY.
 16.608.6600-0 (A)
 243 7/8 D.C. TORQUE MOTOR
 PER CENT FEED RATE CONTROL
 GSF-SH-DL WINSMITH REDUCER
 0 TO 100 I.P.M. FEED RATE

RAIL ELEVATING ASSY.
 16.608.6700-0 (A)
 EXISTING, 5 HP, 11500 R.P.M.
 A.C. MOTOR

TABLE DRIVE ASSY.
 16.608.6500-0 (R)
 1062 1/8 D.C. TORQUE MOTOR
 PER CENT FEED RATE CONTROL
 MVS0090 CONE DRIVE REDUCER
 0 TO 200 I.P.M. FEED RATE
 400 I.P.M. RAPID TRAVERSE

31.0 HIGH ISOLATION TRANSFORMER FLOOR MOUNTED AS SHOWN

AUTOMATIC BED-WAY LUBE ASSY.
 16.720.4200-0 (A)

RECOMMENDED POSITION ONLY OF ELECTRICAL PANEL

ELECTRICALS & PENDANT ASSY.
 16.801.6086-0 (C)
 16.608.6800-0 (A)
 PENDANT BOOM ASSY.

4.5 POSITION II

60.0 APPROX.

28.0 APPROX. (RADIUS OF SWING)

20.0 APPROX.

60.0 APPROX.

20.0 APPROX.

20.62

673.5 APPROX.

50.38 APPROX.

480 APPROX.

RAIL TO COLUMN PRESSURE PAD ASSY.

16.607.6900-0

9.0

102.0 PENDANT BOOM SWING

359.0 APPROX.

673.5 APPROX.

2.12 POSITION II

480 APPROX.

FACE OF COLUMN WAY

9.0

102.0 PENDANT BOOM SWING

359.0 APPROX.

673.5 APPROX.

673.5 APPROX.

2.38 POSITION I

480 APPROX.

FACE OF COLUMN WAY

9.0

102.0 PENDANT BOOM SWING

359.0 APPROX.

673.5 APPROX.

673.5 APPROX.

1.00 MIN. CLEARANCE UNDER SPINDLE

480 APPROX.

FACE OF COLUMN WAY

9.0

102.0 PENDANT BOOM SWING

359.0 APPROX.

673.5 APPROX.

673.5 APPROX.

2.5 TYR

480 APPROX.

FACE OF COLUMN WAY

9.0

102.0 PENDANT BOOM SWING

359.0 APPROX.

673.5 APPROX.

673.5 APPROX.

56.0 TABLE WIDTH

480 APPROX.

FACE OF COLUMN WAY

9.0

102.0 PENDANT BOOM SWING

359.0 APPROX.

673.5 APPROX.

673.5 APPROX.

7.0

480 APPROX.

FACE OF COLUMN WAY

9.0

102.0 PENDANT BOOM SWING

359.0 APPROX.

673.5 APPROX.

673.5 APPROX.

10.0

480 APPROX.

FACE OF COLUMN WAY

9.0

102.0 PENDANT BOOM SWING

359.0 APPROX.

673.5 APPROX.

673.5 APPROX.

21.0

480 APPROX.

FACE OF COLUMN WAY

9.0

102.0 PENDANT BOOM SWING

359.0 APPROX.

673.5 APPROX.

673.5 APPROX.

16.0

480 APPROX.

FACE OF COLUMN WAY

9.0

102.0 PENDANT BOOM SWING

359.0 APPROX.

673.5 APPROX.

673.5 APPROX.

59.0 APPROX. SIDE HEAD TRAVEL

480 APPROX.

FACE OF COLUMN WAY

9.0

102.0 PENDANT BOOM SWING

359.0 APPROX.

673.5 APPROX.

673.5 APPROX.

66.0 APPROX.

480 APPROX.

FACE OF COLUMN WAY

9.0

102.0 PENDANT BOOM SWING

359.0 APPROX.

673.5 APPROX.

673.5 APPROX.

84.0 ELECTRICAL PANEL HEIGHT

480 APPROX.

FACE OF COLUMN WAY

9.0

102.0 PENDANT BOOM SWING

359.0 APPROX.

673.5 APPROX.

673.5 APPROX.

119.5 APPROX. TO FLOOR LINE

480 APPROX.

FACE OF COLUMN WAY

9.0

102.0 PENDANT BOOM SWING

359.0 APPROX.

673.5 APPROX.

673.5 APPROX.

163.5 APPROX.

480 APPROX.

FACE OF COLUMN WAY

9.0

102.0 PENDANT BOOM SWING

359.0 APPROX.

673.5 APPROX.

673.5 APPROX.

156.0 APPROX.

480 APPROX.

FACE OF COLUMN WAY

9.0

102.0 PENDANT BOOM SWING

359.0 APPROX.

673.5 APPROX.

673.5 APPROX.

195 APPROX. TO FLOOR LINE

480 APPROX.

FACE OF COLUMN WAY

9.0

102.0 PENDANT BOOM SWING

359.0 APPROX.

673.5 APPROX.

673.5 APPROX.

210

480 APPROX.

FACE OF COLUMN WAY

9.0

102.0 PENDANT BOOM SWING

359.0 APPROX.

673.5 APPROX.

673.5 APPROX.

66.0 APPROX.

480 APPROX.

FACE OF COLUMN WAY

9.0

102.0 PENDANT BOOM SWING

359.0 APPROX.

673.5 APPROX.

673.5 APPROX.

84.0 ELECTRICAL PANEL HEIGHT

480 APPROX.

FACE OF COLUMN WAY

9.0

102.0 PENDANT BOOM SWING

359.0 APPROX.

673.5 APPROX.

673.5 APPROX.

119.5 APPROX. TO FLOOR LINE

480 APPROX.

FACE OF COLUMN WAY

9.0

102.0 PENDANT BOOM SWING

359.0 APPROX.

673.5 APPROX.

673.5 APPROX.

163.5 APPROX.

480 APPROX.

FACE OF COLUMN WAY

9.0

102.0 PENDANT BOOM SWING

359.0 APPROX.

673.5 APPROX.

673.5 APPROX.

156.0 APPROX.

480 APPROX.

FACE OF COLUMN WAY

9.0

102.0 PENDANT BOOM SWING

359.0 APPROX.

673.5 APPROX.

673.5 APPROX.

195 APPROX. TO FLOOR LINE

480 APPROX.

FACE OF COLUMN WAY

9.0

102.0 PENDANT BOOM SWING

359.0 APPROX.

673.5 APPROX.

673.5 APPROX.

210

480 APPROX.

FACE OF COLUMN WAY

9.0

102.0 PENDANT BOOM SWING

359.0 APPROX.

673.5 APPROX.

673.5 APPROX.

66.0 APPROX.

480 APPROX.

FACE OF COLUMN WAY

9.0

102.0 PENDANT BOOM SWING

359.0 APPROX.

673.5 APPROX.

673.5 APPROX.

84.0 ELECTRICAL PANEL HEIGHT

480 APPROX.

FACE OF COLUMN WAY

9.0

102.0 PENDANT BOOM SWING

359.0 APPROX.

673.5 APPROX.

673.5 APPROX.

119.5 APPROX. TO FLOOR LINE

480 APPROX.

FACE OF COLUMN WAY

9.0

102.0 PENDANT BOOM SWING

359.0 APPROX.

673.5 APPROX.

673.5 APPROX.

163.5 APPROX.

480 APPROX.

FACE OF COLUMN WAY

9.0

102.0 PENDANT BOOM SWING

359.0 APPROX.

673.5 APPROX.

673.5 APPROX.

156.0 APPROX.

480 APPROX.

FACE OF COLUMN WAY

9.0

102.0 PENDANT BOOM SWING

359.0 APPROX.

673.5 APPROX.

673.5 APPROX.

195 APPROX. TO FLOOR LINE

480 APPROX.

FACE OF COLUMN WAY

9.0

102.0 PENDANT BOOM SWING

359.0 APPROX.

673.5 APPROX.

673.5 APPROX.

210

480 APPROX.

FACE OF COLUMN WAY

9.0

102.0 PENDANT BOOM SWING

359.0 APPROX.</