



STEEL EQUIPMENT CORPORATION

PO BOX 307, 897 ROUTE 910, INDIANOLA, PA 15051 USA
PHONE: 412.767.9290 FAX: 412.767.9272
www.steelequip.com e-mail: steelequip@pgh.net



6 Stand Pomini Horizontal/Vertical Roughing Stands New 2001

Merchant Bar Rolling Mill for Sale

Annual Capacity: 250,000TPY

Products: Rounds: 1/2"- 2",Angles: 3/4"- 2",Squares: 1/2"-1", Flats: 1"-4"

Billet Size: 5.25" x 26'

Mill Layout: 16 Stand In - Line

Mill Line Components:

1993 Gas Fired Pusher Furnace with 2001 Charging System, Pomini 2001 6 Stand H/V Roughing Train, Morgan Morgoil Bearing 10 Stand Intermediate and Finishing Train[installed 1993], 3 Crop Shears, Danieli Loopers between #9 and #16 Stands, Riise 1993 35 ft x 220 ft Walking Beam Cooling Bed, Simac 1993 In-Line Multi-Strand Straightener, 2 Product Shears, 1993 Simac Shear Gauge, 2001 Bundle Strapping, 1993 Bundle Handling and Transfer Beds.

Electrical: DC Main Mill Drive Motors, all controlled with SCR's

Roll Shop: Planet Machine, Roll Lathe

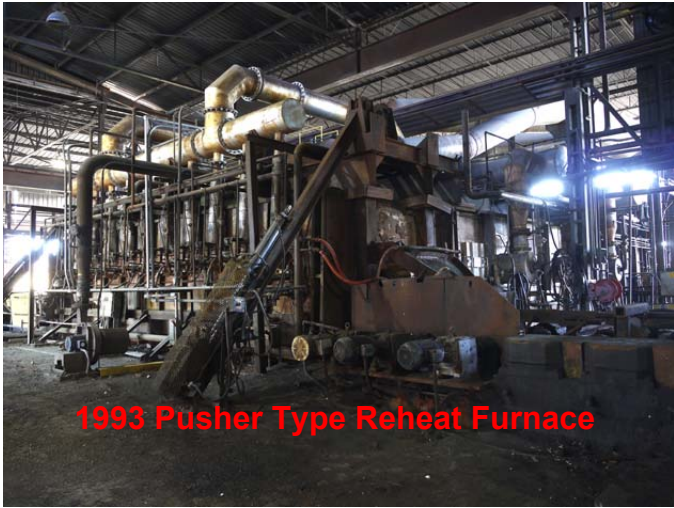
Rolls: Large Roll Inventory for many product sizes and shapes

Overhead Cranes: Complete Crane Package Available

Location: Harriman, TN

Contact Dev Lemster for pricing.

over for photos>>>>



1993 Pusher Type Reheat Furnace



Intermediate Mills



Flying Crop Shear



Cooling Bed



Simac Straightener



Simac Shear and Straightener Drive Side



Sheared Product Transfer



Simac Shear Gauge Entry Side



Simac Shear Gauge



Twin Bundle Strapping Machines



Bundle Transfer Table



Bundle Shipping Table



Shipping Crane



Rolls



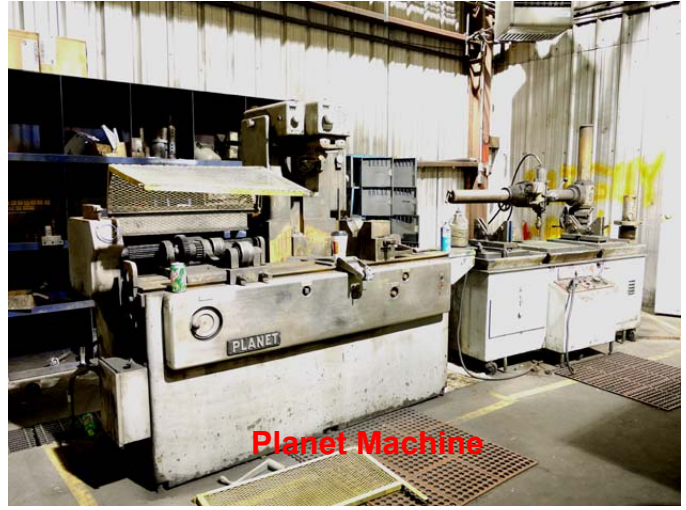
Shape Straightener



Spare Rolls



Roll Shop Lathe



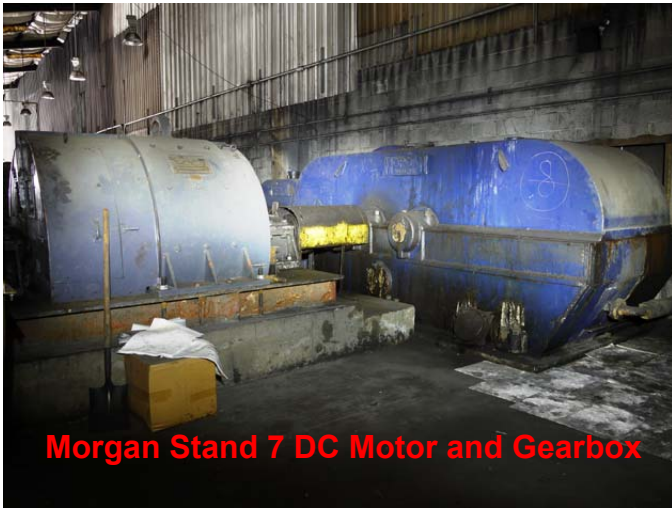
Planet Machine



Roughing Mill Drives



Roughing Mill Motors



Morgan Stand 7 DC Motor and Gearbox



DC Mill Drive SCR Control



Morgan Finishing Mills DC Motors



Electrical Substation for Rolling Mill